

 ***nuhoğlu***



OUR EMPHASIS ON QUALITY DOESN'T CHANGE OVER THE YEARS

Nuhoğlu Construction, which was founded in 1986, carries on its business in real estate and construction sectors at home and abroad. Nuhoğlu Construction, the company that provides services regarding the areas such as housing, infrastructure, landscaping, educational and health projects as well featured buildings, carried out more than 100 projects which are among the symbolic buildings of Turkey.

Beside our İstanbul and Ankara branch offices, our corporation provides services abroad in Iraq, Libya, Kazakhstan along with approximately 5000 employees.

Nuhoğlu Construction, with its dynamic structure, accomplished big projects in a short span of time and became one of the most important firms of the sector, which puts into practice construction areas of 3.000.000 m² up to now.



OUR MISSION; to work for you to reach your ideals...

Parallel to the experience that we have, our expert staff, our hard-liner management philosophy of quality and innovative approaches associated with expectations and needs; to preserve to be one of the most important firms of the sector, to continue our "reliable" and "high quality service" concept, to produce not standard but above-the-line projects in the future as it has been in the past.

OUR VISION; to advance after the success...

To move on without cease and provide best solutions in all projects forever in accordance with our strong, determined professional institutional structure and with our "reliable" and "high quality service" concept.

HOUSING PROJECTS

Yenitepe Kadıköy
Ankara Çukurambar
Küçükkuyu Port
Ankara Protokol Yolu
Ankara Yenikent
Yenikent İlksan
Karabük Cevizkent

FEATURED CONSTRUCTIONS

Aqua Florya Shopping Mall and Life Center
İstanbul Aquarium
Crowne Plaza Hotel / Florya - İstanbul
Sinan Erdem Dome
Gürpınar Aquacultural Marketplace
Cebeci Olympic Sports Complex
Bağcılar Cultural Center
Sabiha Gökçen Hangar and Complements

EDUCATIONAL PROJECTS

Hitit University - Çorum
Medeniyet University - İstanbul
Kocaeli University Umuttepe Central Campus Dormitory and Lodging Buildings
School Projects

HEALTH PROJECTS

Çekmeköy State Hospital
Van Yüzcüncü Yıl University Research and Application Hospital
Gümüşsuyu Military Hospital Polyclinics Construction and Repair

INFRASTRUCTURAL PROJECTS

High Speed Train Project / Adana - Mersin
Yenikapı Square Restructure
Wastewater and Rain-water Trenches Construction
Gölcük (Kocaeli) Potable Water Construction
Bilecik Sewer System Construction
Roads and Intersections Projects

CITY PARKS

Bayrampaşa City Park
Bursa Zoo
Cebeci City Park
Çırpıcı Çayırı Sports Park
European Side International City Forest
Groves and Parks Across İstanbul

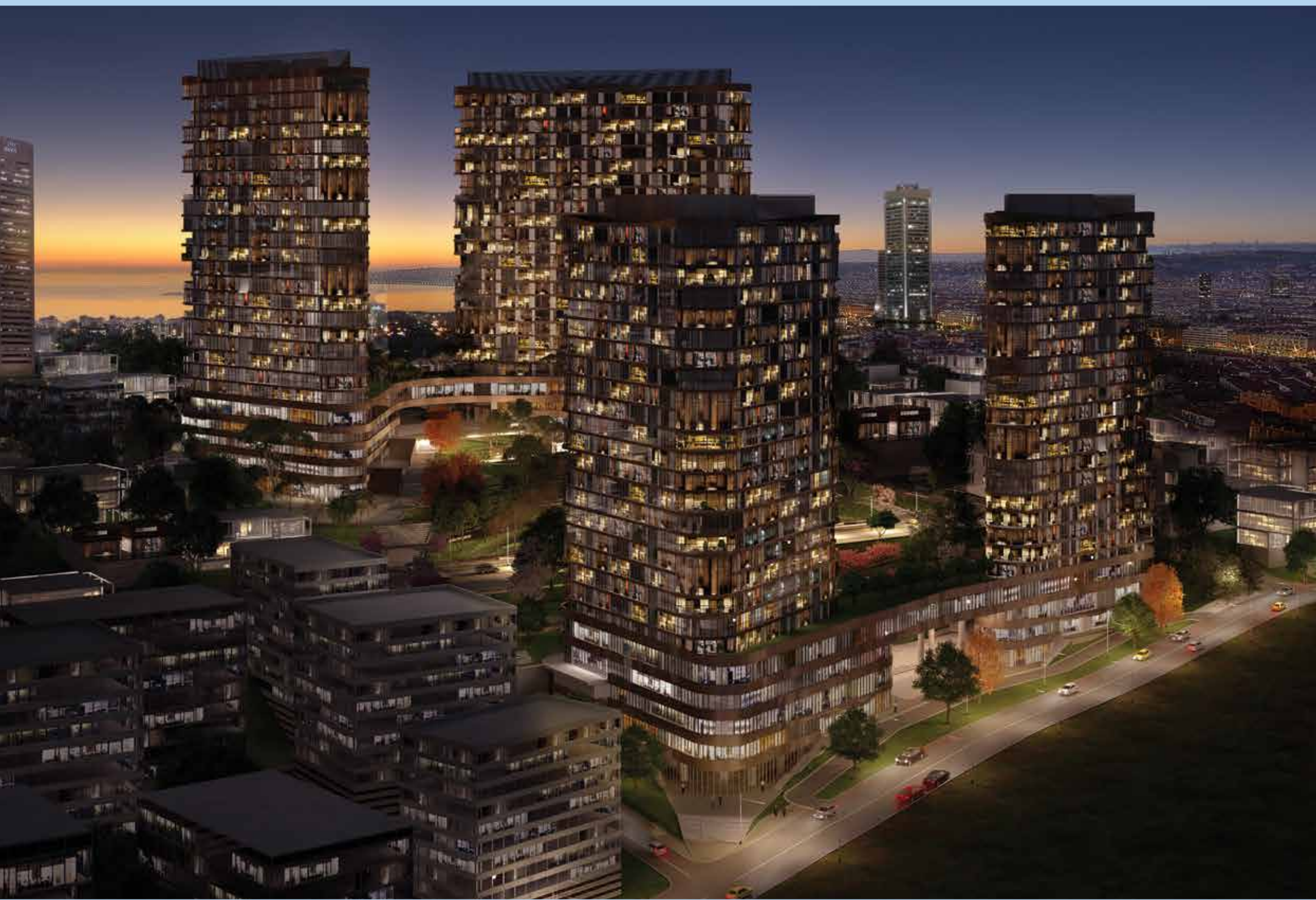
FOREIGN PROJECTS

Prime Plaza Shopping Mall and Entertainment Center - Kazakhstan
AL Maamil Hospital - Iraq
Ata Complex Luxurious Estates- Kazakhstan
Mitrit Hospital - Libya



HOUSING PROJECTS

YENİTEPE KADIKÖY
ANKARA ÇUKURAMBAR
KÜÇÜKKUYU PORT
ANKARA PROTOKOL YOLU
ANKARA YENİKENT
YENİKENT İLKSAN
KARABÜK CEVİZKENT



YENİTEPE KADIKÖY

YENİTEPE PARK - YENİTEPE CADDE

NEW LIFE'S CENTER OF ATTRACTION

Yenitepe Kadıköy, which is included in Fikirtepe urban development project, offers a privileged lifestyle for those who want to live the beauty of life. Yenitepe Kadıköy, located in one of the main centers of Anatolian side of İstanbul, provides elevation advantage with being on top of the highest hill around. The project, having magnificent panoramic view of the Bosphorus, Historical Peninsula, Marmara Sea and Princes' Islands, eliminate the transportation problem due to proximity to the public transportation vehicles. Having 2 stages as Yenitepe Cadde and Yenitepe Park, Yenitepe Kadıköy is capable of meeting all kinds of housing needs and expectations.





Yenitepe Kadıköy is a model project reflecting a modern İstanbul district which moves up the lifestyle standarts by the Tabanlıoğlu architecture design.

The project, which utilizes the basement as the green area on which 21 storey triangle formed housing blocks soar, has a unique placement of housing masses with different perspectives that gives every unit a comfortable wide view with a panoramic scenery available in the upper storeys. The residences have distance between them and face towards different angles, so that they have different panoramic views of İstanbul from The Historical Peninsula to the Princes' Islands. Due to the advantage of its triangle form allowing the placement of synchronized masses, none of them turns its back to İstanbul's

any point, gathering the aesthetical construction groups together which will shape the silhoutte of the city.

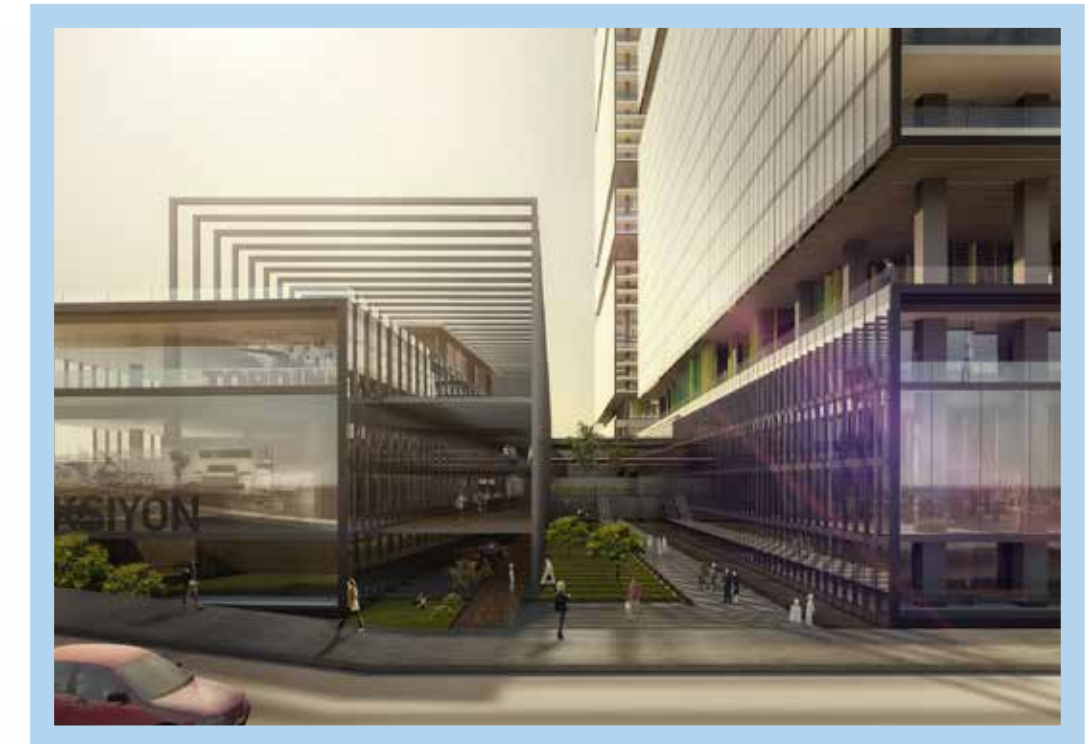
The project consists of 1100 housings in total, composed of 4 towers with each having 21 storeys on 2 basements with 5 storeys, containing a range of 1+0 to 5+1, varying from 67 m² to 318 m², many alternatives together in different sizes and properties. Basement storeys include offices, lower storeys include commercial areas interconnecting to the street. Flats in any size are custom designed from kitchens to bathrooms, cabinets to built-in products based on your very own taste.

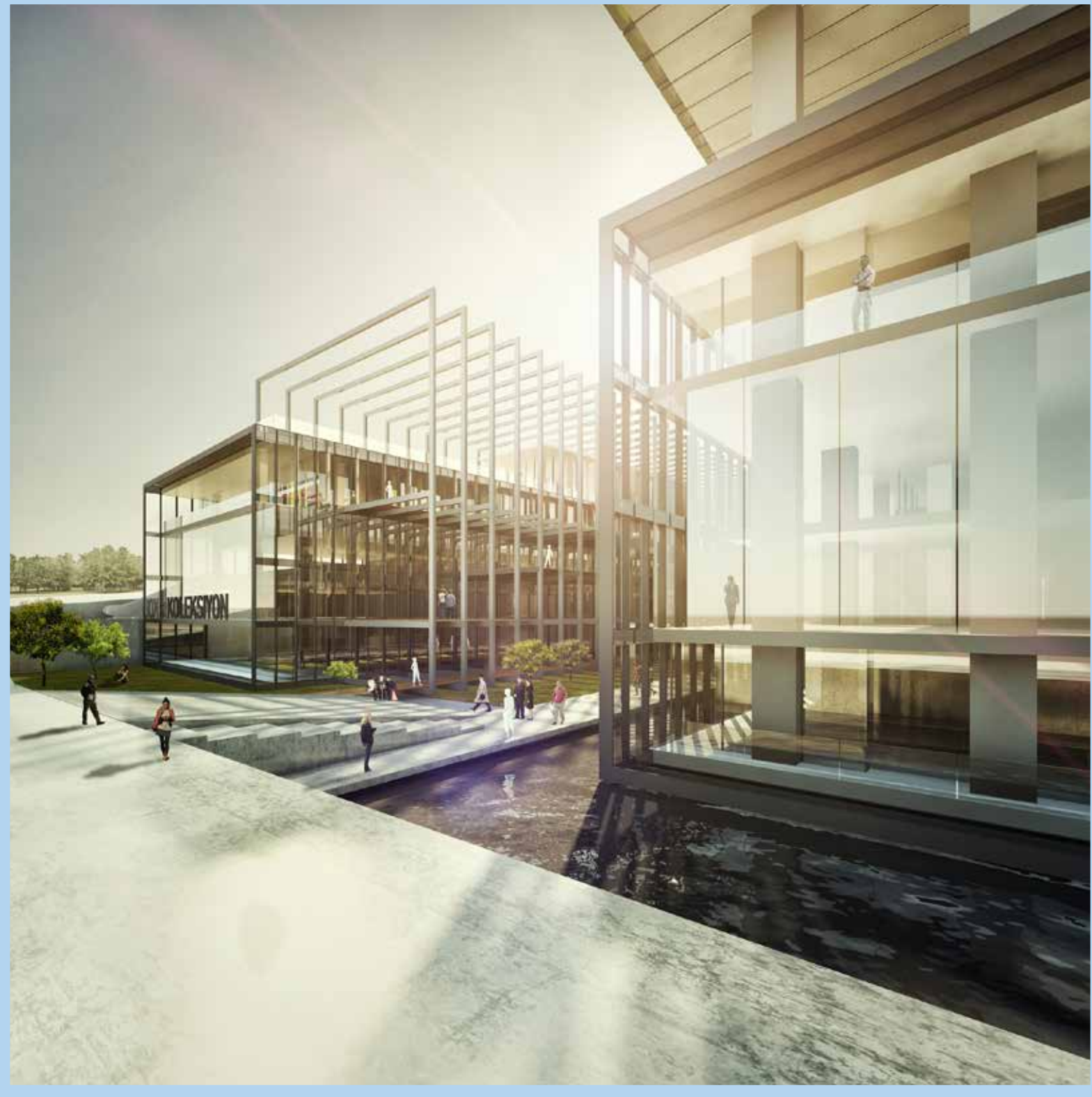


ANKARA ÇUKURAMBAR

A PERFECT MONUMENT THAT WILL SUIT THE CAPITAL

Çukurambar project, measuring 155.000 m² in total with its 2 towers, will be the new attraction center of the capital town. This precious investment and life project, which will rise up on Çankaya, plans to breathe new life into Ankara including housings, commercial areas, a hotel, a shopping mall, restaurants, cafes and many social opportunities in it.







KÜÇÜKKUYU PORT

FOUR-SEASONS RESORT DELIGHT ON THE
FOOTHILLS OF MOUNTAINS OF İDA

Küçükkuyu Port in Edremit Bay, which is the holiday paradise of North Egean, is composed of 17 blocks and provides opportunity to live with pleasure and in safety throughout 12 months. Beside its natural beauty and the other advantages it has, the peace is under guarantee with the 365 days and 24 hours security system. There are 3 housing options in the project regarding 2+1, 3+1 and 4+1 and the sizes of the apartments varies between 82m² and 182 m². There are two 90 meters swimming pools, a private beach, a beach bar, a personal parking area, a kinder playground and sports area among the social opportunities of the project. Küçükkuyu that has wide beaches and blue flagged sea, provides possibility to enjoy all-day-luminous sea on the private beach for the complex dwellers.



ANKARA PROTOKOL YOLU

MASS HOUSINGS AND SOCIAL FACILITIES

A MODERN CITY ON STRONG AND FIRM BASIS

The constructions of mass housings and social facilities in Ankara Pursaklar satisfy modern lifestyle requirements and ensure any kind of social and cultural needs of homeowners. Planned studiously and with earthquake proof under guarantee of Nuhoğlu Construction, the project consists a primary school with 24 classrooms, a high school with 24 classrooms, 2 sports halls and inner city block general infrastructure and landscaping constructions beside the housings.



ANKARA YENİKENT

TOTAL QUALITY MANAGEMENT IN MASS HOUSINGS

Nuhoğlu Construction who studiously and delicately put every project undertaken into the practice, increases life standarts of homeowners in the mass housing in Ankara Yenikent 1 st zone. Having a market, a restaurant, a mosque and a mosque fountain are located in the project, it has the feature to satisfy all needs and expectations. The project was completed in a very short period including all infrastructure and landscaping works and the housings were constructed by tunnel formwork system whereas social facilities were constructed by conventional formwork systems.



YENİKENT İLKSAN

SOCIAL FACILITY CONSTRUCTION

QUALITY IN EVERY FIELD FROM PROJECT LAYOUT TO APPLICATION

Within the scope of the Yenikent İlksan Project, Nuhoglu Construction, who carries on succeeding with the featured housing projects provided, supplies all requirements of the modern life inside of the complex. A shopping mall, a primary school with 32 classrooms, a pre-school, a sports dome, a mosque and a health center within the body of the complex of Yenikent İlksan satisfies all needs of homeowners. The project includes inner city block infrastructure and landscaping works and it is the address of the safe and comfortable life for the complex dwellers.



KARABÜK CEVİZKENT

A GREAT RENEWAL WELCOMED BY THE URBAN DEVELOPMENT

Being more than an ordinary housing project, Cevizkent housings satisfies all expectations of social life in modern criteria offering special opportunities that are provided for shopping, education, cultural and sports activities. It is constructed considering the most important needs in the estate buiding field and it includes estates and multi storey car parks.





FEATURED CONSTRUCTIONS

AQUA FLORYA SHOPPING MALL AND LIFE CENTER
İSTANBUL AQUARIUM
CROWNE PLAZA HOTEL / FLORYA - İSTANBUL
SİNAN ERDEM DOME
GÜRPINAR AQUACULTURAL MARKETPLACE
CEBECİ OLYMPIC SPORTS COMPLEX
BAĞCILAR CULTURAL CENTER
SABİHA GÖKÇEN HANGAR AND COMPLEMENTS



A LIMITLESS LIFE EXPERIENCE BY THE SEA

Nuhoğlu Construction unites 3 different needs under one complex and offers you to have an experience full of privileges beside the seashore. Aqua Florya Shopping Mall for shopping demands, Istanbul Aquarium to explore the aqua world, Crown Plaza Hotel for a qualified hotel service are united under the same roof and a unique concept takes place in Istanbul.



AQUA FLORYA SHOPPING MALL AND LIFE CENTER





ENTERTAINMENT AND SHOPPING HAS A NEW REFRESHING CONCEPT WITH “AQUA”

The center changes classical shopping mall mentality and provides a brand-new concept attracting attention with the biggest thematic aquarium of the world, “Istanbul Aquarium”, inside of it. Aqua Florya resembles an off scale high quality and modern service approach with the parking area, open air amphitheater with the capacity of 2.500 visitors, 11 movie halls, an open bazaar and exhibition and cultural areas. Sea view cafes and restaurants, which serve delicious tastes from the world cuisine to the customers, are among the other differential features of the project.

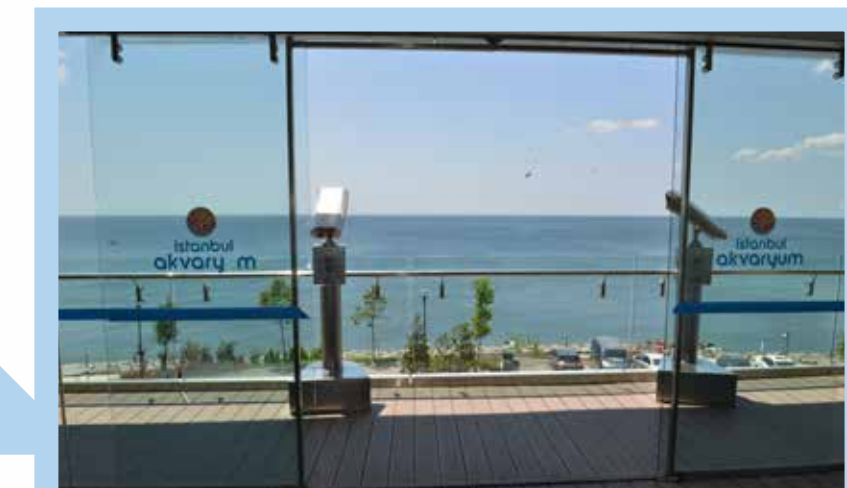




İSTANBUL AQUARIUM

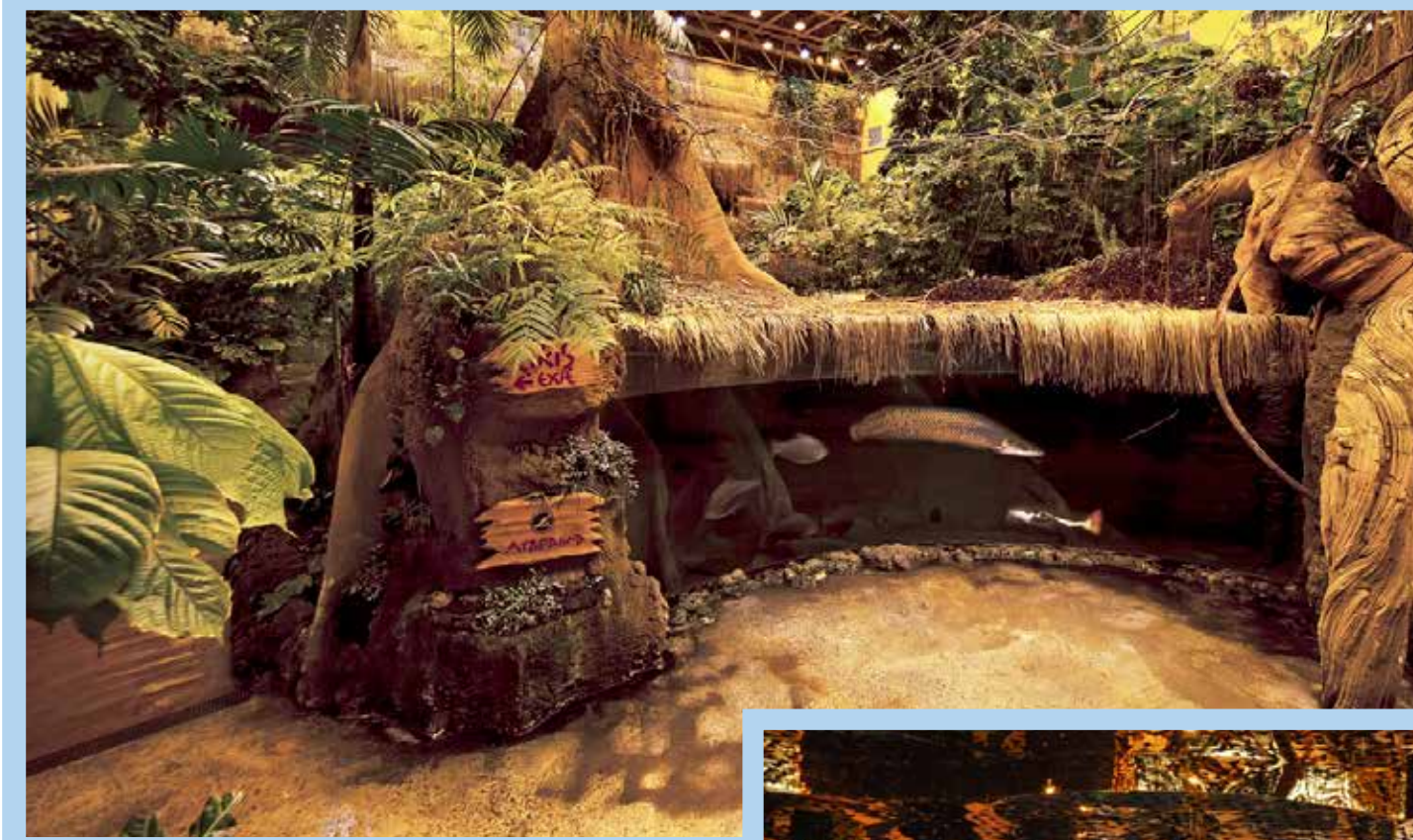
A VOYAGE TO THE AQUA WORLD

The center is not only a shopping and an entertainment center, but also a place where important information about flora and fauna of the aqua world are found. The visitors are taken to an enjoying voyage beginning in the Black Sea through the Marmara Sea, the Aegen Sea, the Mediterranean Sea, the Red Sea and the Pasific Ocean while the magics of subaqua life can be experienced. Istanbul Aquarium has 1.500 form of nektons (sea creatures), 17.000 fishes as well as tunnels and tanks made of acrylic glass of various thicknesses up to 40 cm. It gets admiration of people aged from 7 to 70 with its motion picture theaters, adventure parkours, cafes and restaurants, a sea themed photoshoot unit and a souvenir shop.





Istanbul Aquarium presents visitors a real nature experience. It embodies a real rain forest with sprinkler, mist and air-conditioning systems. It offers a chance to observe sharks from all around the world and even to swim with them.





CROWNE PLAZA HOTEL / FLORYA - İSTANBUL

AN EXCLUSIVE ACCOMMODATION SERVICE

Crown Plaza Hotel locating in the Istanbul Aquarium Complex, sets a privileged accommodation approach with its high quality services and comfort provided. The hotel, that is very close to the sea, is also only 700 meters from the Atatürk Airport.





▶ The Crown Plaza Hotel has 310 rooms on 6 storeys. It serves with 1 outdoor swimming pool, 1 open-roof restaurant, 1 SPA and fitness center, 1 multipurpose hall and 5 meeting halls.

SİNAN ERDEM DOME

ONE OF THE MOST IMPORTANT SPORTS DOMES OF EUROPE

Sinan Erdem Dome belonging to Istanbul Metropolitan Municipality, is one of the biggest sports arenas of Europe with its approximately 16.000 people capacity. With the leadership of FIBA and American RTKL Associates Inc. Architecture Company, it has been designed with the leading edge technologies and it is pointed as the essential address of important events with its international standards level. In the sports center, which has 73.400 m² construction area with 40.000 m² of indoors space, every technical equipments are provided for national and international events. The project, that was awarded with Turkey's "The Most Successful Real Estate Investments Competition / Sports Complex" category; has 34 VIP suits, 10 dressing rooms which are furnished in accordance with FIBA standards, 1 fitness center, referee rooms, FIBA observer room, multipurpose offices, 6 elevators and 2 disabled platforms. Under favour of the telescopic mobile tribune system, the dome is able to be used for volleyball and handball matches as well as various visual shows, concerts and other events besides basketball.





GÜRPINAR AQUACULTURAL MARKETPLACE

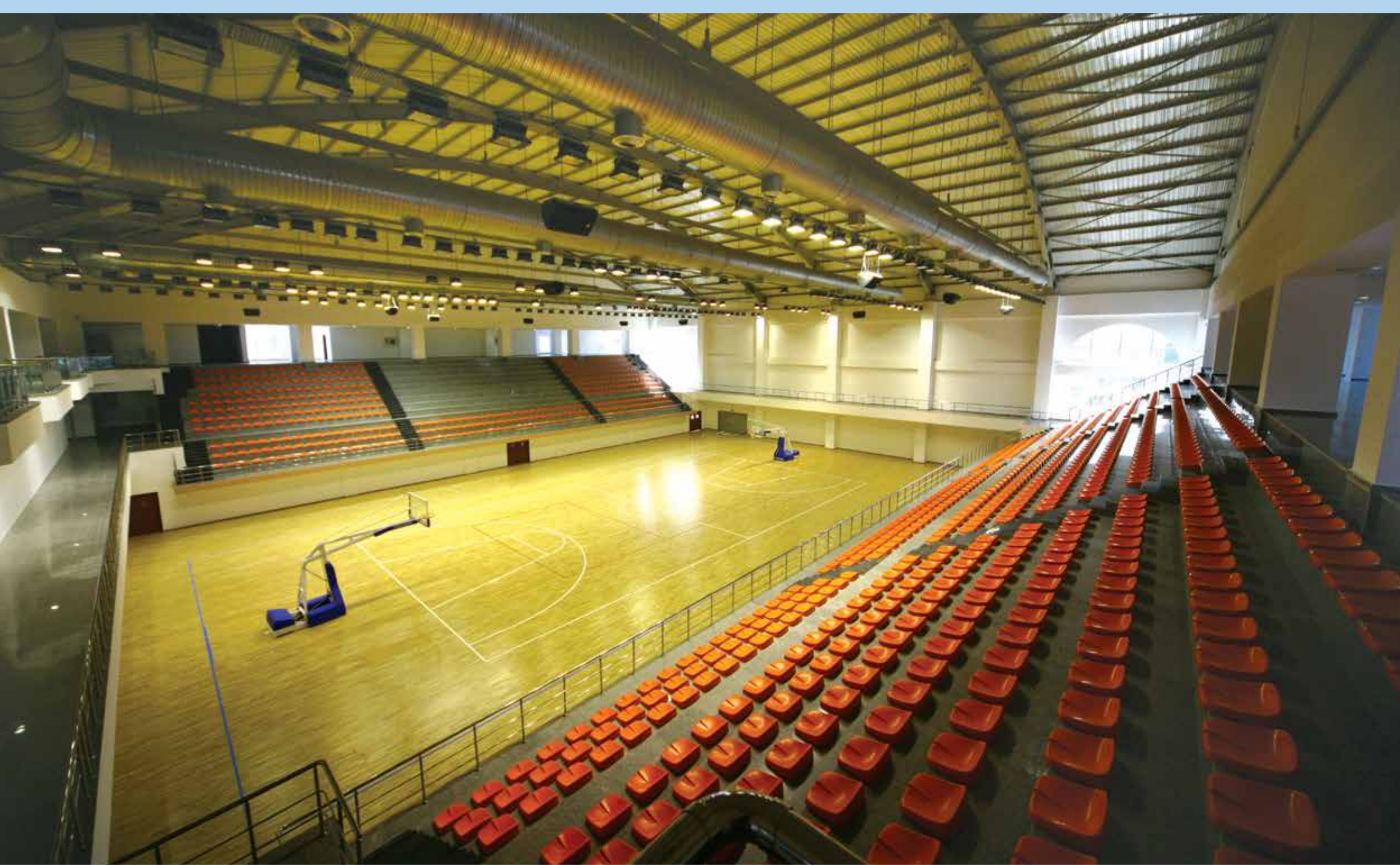
A VERY SPECIAL COMPLEX MEETING EUROPEAN STANDARDS

This special complex structured in European standards, diverges from the other standard aquacultural centers because of the elegant areas in it. In addition to aquacultural products sales system units, there are social and activity areas in the marketplace. Within the plantation; there are preliminary acceptance of fish and cargo handling area from the ships and vehicles, acceptance of fish and marketplace hall, box washing and box storage areas, cold storages, frozen products storages, electronic salesroom, management offices, seminar and education hall, auction area, bank branch, cafe and restaurants, archives, fish handling offices, social platform, security desks, cooking fish show center, fish sale units, power distribution center and security room.





▶ Gürpınar Fisheries Marketplace, which will change the present conception of “Fisheries Marketplace” of Turkey, is on the border of the Marmara Sea, on a total area of 200.000 m², having 55.000 m² of it onland and 145.000 m² of it on bulkhead line. It is featured as a concept project, not only a fish marketplace but a unique complex where you can get socialized with your beloved ones spending time in several cafe and restaurants.



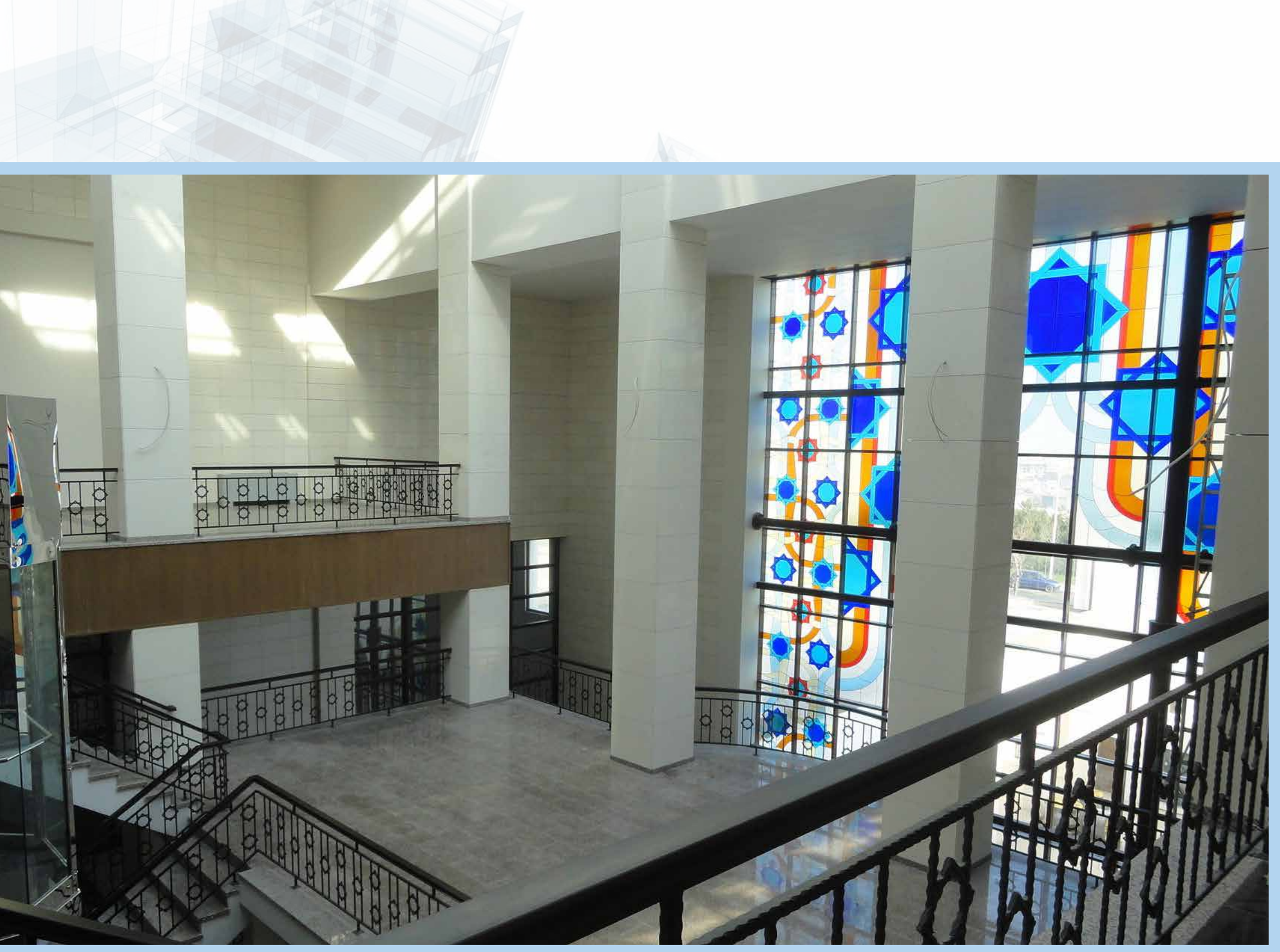
CEBECİ OLYMPIC SPORTS COMPLEX

AN INTERNATIONALLY QUALIFIED MULTI-PURPOSE SPORTS COMPLEX

In Cebeci Olympic Sports Complex, which was constructed in accordance with international standards and has features befitting to sports events which are followed by the whole world with great interest and like, has an olympic-size indoor swimming pool, olympic-size indoor basketball and volleyball courts, a stadium for a diverse variety types of football games, several indoor and outdoor training fields and courts for seven different sports and sports halls.

This special sports complex, which also host international competitions, also has a conference hall, a hotel with a capacity of 320 beds for the accomodation of national and foreign athletes, cafeterias and restaurants, 2 fitness centers, 4 saunas, a Turkish bath, massage rooms, and independent locker rooms, rest rooms, showers and necessity areas for all sports areas.





BAĞCILAR CULTURAL CENTER

Constructed on an area of 12.000 m² and composed of 4 basement floors and a ground floor, this cultural center has 1 movie theater, 1 stage theater, 2 multipurpose halls, a library, exhibition halls, walking trails, training areas and an indoor parking garage. Limra stone paving is used on the outer front and walls, natural granite paving is used for the interior spaces of this project which has 2 normal and 1 panoramic elevators. In the Bağcılar Cultural Center, which is based on Seljuk architecture, intense use of wood and also stained glass works appear.





SABIHA GÖKÇEN AIRPORT

HANGAR AND COMPLEMENTS

The project includes the constructing of a steel construction hangar which has 8,500 m² of indoor space consisting of 5 modules on an apron area of 16,000 m². Within the body of the project, there are a concrete workshop building and a water reservoir, a power distribution building, a concrete installation gallery as well as a landscaping on an area of 4,000 m² and lighting works over an area of 30,000 m².





EDUCATIONAL PROJECTS

HİTİT UNIVERSITY - ÇORUM
MEDENİYET UNIVERSITY - İSTANBUL
KOCAELİ UNIVERSITY Umuttepe Central Campus Dormitory and Lodging Buildings
SCHOOL PROJECTS



HİTİT UNIVERSITY / ÇORUM

THE SUN OF KNOWLEDGE ENLIGHTENS THE CIVILIZATION

The project, which is configured by considering the education approaches required by present day, includes Hitit University North Campus 1 st stage infrastructure (roads, water, potable water, rain-water, heat and energy center), Faculty of Economics and Administration, Faculty of Theology, dining hall and indoor sports hall buildings.





MEDENİYET UNIVERSITY / İSTANBUL

A QUALIFIED EDUCATION
INSTITUTION FOR CIVILIZED SOCIETIES

The Medeniyet University, which is one of the best examples of Nuhoğlu Construction's sensitivity on education, aims to rank among the significant universities of Istanbul. The university locating on 15.000 m² area, includes 3 steel buildings, 1 concrete water tank, and 1 substation. High quality and steady materials are used for this project as well as Nuhoğlu Construction's all other projects, and it provides an exclusive education platform with its eco-friendly feature and landscaping area of 11.000 m².





KOCAELI UNIVERSITY

UMUTTEPE CENTRAL CAMPUS

DORMITORY AND LODGING BUILDINGS

SPECIAL FACILITIES COMPLETED WITH COMFORT FOR
EDUCATIONAL INSTITUTIONS

The Kocaeli University Lodging Buildings project, which is started with the improvement of land works in the field of Umuttepe Kampus, has 5 different types of dormitories for students and lodging buildings consisting of 62 blocks. Beside the buildings, the project constructed specifically for academic staff has also courts, kids playing grounds, social facilities, a parking area, vehicle and pedestrian paths meeting the requirements of the institution.





Ziyapaşa Secondary School



Yahya Kemal Elementary School



Sultantepe Secondary School



Dobruca Primary School

SCHOOL PROJECTS

STRENGTHENED SCHOOLS FOR A BRIGHT FUTURE

Nuhoğlu Construction, who provides services in line with requirements and expectations of the society, creates value in the public space with the projects on education. Nuhoğlu Construction's signature under the projects either on structural strengthening or on construction issues, from primary school to university both on private and public space, demonstrates emphasis given to the education. Nuhoğlu Construction doesn't restrict its qualified services only within the Istanbul, but carries it to all cities and regions in need.

Some Schools Repaired or Built: Alibeykoy Primary School, İvatt Turhan Secondary School, Vehbi Koç Foundation Hotel Management and Tourism Vocational High School, Eyüp Anatolian High School, Ziyapaşa Secondary School, Hattat İsmail Hakkı Primary School, Ülkü Bora Primary School, Sultantepe Primary School, Kaptanpaşa Primary School, Yahya Kemal Primary School.



Hattat İsmail Hakkı Primary School



HEALTH PROJECTS

ÇEKMEKOY STATE HOSPITAL
VAN YÜZÜNCÜ YIL UNIVERSITY RESEARCH AND APPLICATION HOSPITAL
GÜMÜŞSUYU MILITARY HOSPITAL POLYCLINICS CONSTRUCTION AND REPAIR



ÇEKMEKÖY STATE HOSPITAL

HEALTHY INVESTMENTS FOR A HEALTHY FUTURE

Nuhoğlu Construction, standing out with successful health projects, adds a new one to its qualified services on public space with Çekmeköy State Hospital. In the 170 bed capacity hospital which is being constructed in Alemdağ district on 14.000 m² by using earthquake insulators; there are emergency services, policlinics, laboratories, new-born units, radiology units and so on. The hospital will be constructed in 2 blocks with each having 3 basement storeys, 1 ground storey, 1 installation storey and 7 regular storeys.





VAN YÜZÜNCÜ YIL UNIVERSITY

RESEARCH AND APPLICATION HOSPITAL

HEALTHY STEPS ON THE ROAD TOWARDS A HEALTHY LIFE

Nuhağlu Construction carries out successful projects both at home and abroad, responding the expectations and needs in the health field by maintaining its quality standarts. Embodying Research and Application Hospital, Van Yüzüncü Yil University Medical Faculty services with 400 beds capacity. There are an emergency department, a blood bank, 6 operating rooms, 2 x-ray rooms, a conference hall and a parking lot beside many polyclinics and departments.





GÜMÜŞSUYU MILITARY HOSPITAL

CONSTRUCTION AND REPAIR OF THE POLYCLINICS

Beside the general repair of the Gümüşsuyu Military Hospital, which is undertaken by Nuhoğlu Construction in 1997 and was successfully completed within a short period of time and affiliated to the Ministry of National Defense, repairs applied includes Gümüşsuyu HAIT general repair, repairment of the door and window profiles of chief surgeon building office, reconstruction of polyclinics (Dermatology, Urology, Plastic Surgery, Orthopedy, External Diseases, Cardiology, Physiotherapy, Psychology) and laboratories (Biochemistry and Infectious Diseases).





INFRASTRUCTURAL PROJECTS

HIGH SPEED TRAIN PROJECT / ADANA - MERSİN
YENİKAPI SQUARE RESTRUCTURE
WASTEWATER AND RAIN-WATER TRENCHES CONSTRUCTION
GÖLCÜK (KOCAELİ) POTABLE WATER CONSTRUCTION
BİLECİK SEWER SYSTEM CONSTRUCTION
ROAD AND INTERSECTIONS PROJECTS



HIGH SPEED TRAIN PROJECT/ADANA - MERSİN

THE POWER DECREASING THE DISTANCES: "SPEED"

Within the context of High Speed Train Project, Nuhoğlu Construction will provide service for railway route between Adana and Mersin, receiving attention with its quality in the European Standards. Between the stations Adana and Mersin, the addition of 3rd and 4th routes next to the 67 km double route railway are planned. Within the scope of the project; including infrastructure transformations such as electricity, water, natural gas, telephone, 1.000.000 m³ excavation, 120.000 m³ backfill, 270.000 m³ rockfill and construction of 15 overpasses, 25 bridges, 4 subpasses, grills and 6 stations are being planned.







YENİKAPI SQUARE RESTRUCTURE

A BRAND - NEW ENVIRONMENT AND
URBANISM CONCIIOUSNESS

The project which brought in a modern square that Istanbul citizens were longing for, is in Yenikapi. Within the scope of the project; 2 km long enrockment construction first phase is completed by 1.300.000 tons of rockfill mostly from the sea, partly from the land. As a consequence of completion of square landscaping project, there are a 1.250.000 people capacity meeting arena and 2 bulky parking areas. Under the favour of the square, which is entegrated with highway, seaway and light rail systems, treatment of wastewater of 2.500.000 inhabitants are provided.





WASTEWATER AND RAIN-WATER TRENCEHES CONSTRUCTION

Within the scope of the project, Kağıthane, Alibeyköy, Ayvaldıere and Şirindere streams are being improved. At the same time, wastewater problems of the following districts which are in the 1 st region; Bağcılar, Bahçelievler, Bakırköy, Beyoğlu, Beşiktaş, Eyüp, Güngören, Esenler, Bayrampaşa, Kağıthane, Alibeyköy, Küçükçekmece, Sarıyer, Şişli, Zeytinburnu and Sultangazi are being ironed out. Within this project which is completed for İSKİ, problems ongoing for a long time and posing distress for the habitants are being worked out as well as possible disasters and floods are avoided.



GÖLCÜK (KOCAELİ) POTABLE WATER CONSTRUCTION

Gölcük potable water supply network which was badly damaged in the devastating Gölcük earthquake in 1999, was redesigned precisely by Nuhoğlu Construction based on the estimated population data for 2035 and was completed studiously and quickly in 2003. In this project where high quality materials are used, modern techniques are applied, human health is taken into consideration carefully in any respect; there are 56 cm in diameter HDPE polyethylene pipes, 135 km long distribution network and also 350 km pipe installation varies in diameter and feature. The project includes, 5 different wells and 2 dams that were used as water sources and a catchment station. Water cummulated in 5 deep wells is pumped into the reservoir via 2 grouped lifting station main which is 4.091 m long in total. To feed the network, there are two 500 m³ and one 700 m³ reservoirs. Gölcük Water Network is completely renewed with this project and also 3.400 new subscribers are connected to the network.



BİLECİK SEWER SYSTEM CONSTRUCTION

The construction of the sewer system which took place in Osmaniye Bilecik and is completed under the guarantee and quality of Nuhoğlu Construction, includes the constructing of sewer network line by concrete pipes, sewer cummulator line by concrete pipes, sewer parcel connection line, soil stabilazation, sewer quantitive working drawing measurement calculation, plottings and drawings, and also sewer network, receiver and collector lines scannings. Public and environment health are taken into consideration in maximum degree from the beginning of the project to the end. 42.300 m network line, 6.036 m parcel connection line, 1.034 prefabricated examination chimneys and 1.972 prefabricated parcel chimneys are constructed in total.

ROAD AND INTERSECTION PROJECTS

AGE DEFYING ROADS, VIADUCTS AND INTERSECTIONS

Nuhoğlu Construction, which turns into a milestone with every project, keeps moving forward in public highway operations providing high quality and assurance.

Mersin Highway Junctions: Starting from Adana - Erdemli highway, the project includes the Mediterranean Olympic Stadium junctions, 2 crosspoint bridges, 1 underpass bridge, 1 intersection and 11 box culverts.

Adana - Kozan Road Construction: This project will bond Adana to Kayseri through Kozan and make transportation way easier including land works between Adana - Kozan Turnout and Mansurlu 6. Zone Border, art buildings, bridge and crosspoint building and renovation construction. The project will be one of the important lanes bonding the Mediterranean to the Central Anatolia.

Horasan - Karakurt - Sarıkamış Project: The project will be one of the main arteries of Turkey opening to the Caucasus with the main junction lines from Horasan, Erzurum to Kars, Ardahan and Iğdır.

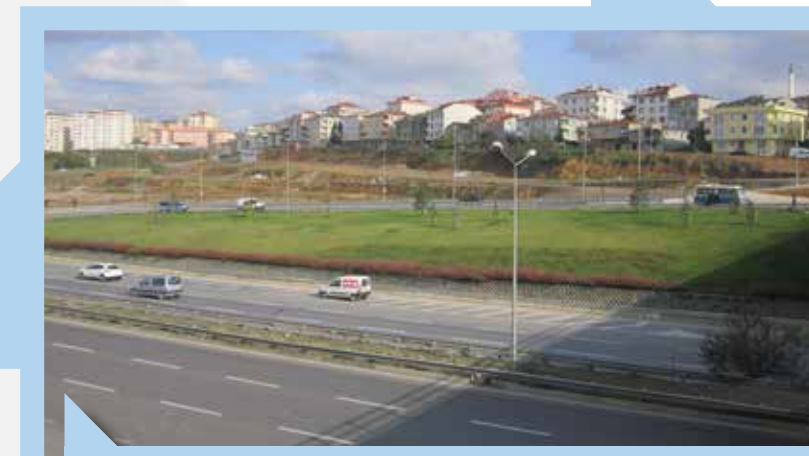
Edirnekapi - Metris Road and Infrastructure Facilities: The project includes the buildings of rain-water and wastewater infrastructures, the piping of drinking water, the displacement of electricity line, the making of the road arrangements and the renewal of the Telecom lines, sidewalks, cobblestones and welts.



Mersin Highway Connections



Adana - Kozan Road Work



Mersin Highway Connections Edirnekapi - Metris Road Infrastructure Facilities



Horasan - Karakurt - Sarıkamış Project



AGE DEFYING ROADS, VIADUCTS AND INTERSECTIONS

Road border, pavement and infrastructure works: Nuhoğlu Construction, to built clean, contemporaneous and modern cities; carried out and put into practise road, border, pavement constructions and infrastructure projects and continues to do so. Infrastructure, border and pavement constructions of Kozyatağı, Acıbadem, Göztepe, Fenerbahçe, Koşuyolu, Suadiye and Bostancı quarters and Anatolian side pedway border and pavement constructions and repairs are some of these works.

Bağcılar Mahmut Bey Street regulation and pedestrianization: The project includes regulation and pedestrianization works on three different streets of Bağcılar, installation of the existing electricity lines under the ground, pavement renewals for modernization in Bağcılar, pedestrianization on Kirazlı street by using plate stones and natural bazalt plates.

Bağcılar Mehmet Akif Boulevard: The project includes approximately 4 km and 22.000 m² pavement renewal as well as heightening of 8 km long steam partitions, making railings and arranging road level with precast and landscaping of main refuge.

Çekmeköy Roads and Intersections: The project including construction of various road and links as well as junctions that Çekmeköy region needs.

Lightening of Coastal Road and parks between Kadıköy and Tuzla: The project includes 1.930 lampposts, 206 kilometres long armored underground cable, 65 kilometres long coastal road lightening by using high luminescenced lightening armatures.





CITY PARKS

BAYRAMPAŞA CITY PARK
BURSA ZOO
CEBECİ CITY PARK
ÇIRPICI ÇAYIRI SPORTS PARK
EUROPEAN SIDE INTERNATIONAL CITY FOREST
GROVES AND PARKS ACROSS İSTANBUL



BAYRAMPAŞA CITY PARK

A NATURE FRIENDLY CITY PARK

Bayrampaşa City Park, offers a great escape from the stress and the chaos of the city allowing to be in touch with nature. The Park have an amphitheater, outdoor movie, a range of restaurants, cafes and cafeterias, fine arts training and exhibition areas, sports courts consisting of basketball, football, volleyball and tennis, a health care house, a range of kid's playgrounds, a farm life section, a helicopter runway, a flag tower, a mosque, a pond and waterfalls, motor vehicle, bike and pedestrian routes, a car park and an administration building.





BURSA ZOO

A MODERN EQUIPPED ZOO IN EUROPEAN STANDARTS

Bursa Zoo, a member of European Zoos Union, supplies living space to many animals under adaptable conditions to their habitat. The Zoo, which is visited by hundreds of thousands people every year due to its features, has 600 animals under 67 species taken shelter which are mostly endemic in Turkey. In the zoo, which appears to be frequent destination for young or old every one, there are sections of bears, voves, lions, leopards, raptors, water birds, lama, wild donkey, camel, monkey and an Afrika Savvannah section shelter ostriches and zebras. Furthermore, the project includes 9 ponds, a walking trail, 3.000 trees which are mostly oaks, and a representative of one of a street of Cumalıkız Village in accordance with the original one.





CEBECİ CITY PARK

The project, located on approximately 500.000 m² around five very solid ponds, has 2 mini football courts, 2 basketball and tennis courts, locker rooms and a regularly structured football court based with artificial turf which has a tribune of 5.000 people. With picnic and rest areas, restaurants and cafes for everyone, it is a relaxing escape area in the city.





ÇIRPICI ÇAYIRI SPORTS PARK

The project is located in one of the main central points of Istanbul, where mixed functions and green meets, covering 500.000 m² area. Comprising a design of contemporaneous standards befitting Istanbul, the project includes a sports yard, a cafeteria park service building, an extreme sports area, an athletics playground for children, sports arenas, a locker room building, a multi-purpose open field, climbing walls, a mock-up playground, an adventure playground and the Parks and Gardens Head Office building.



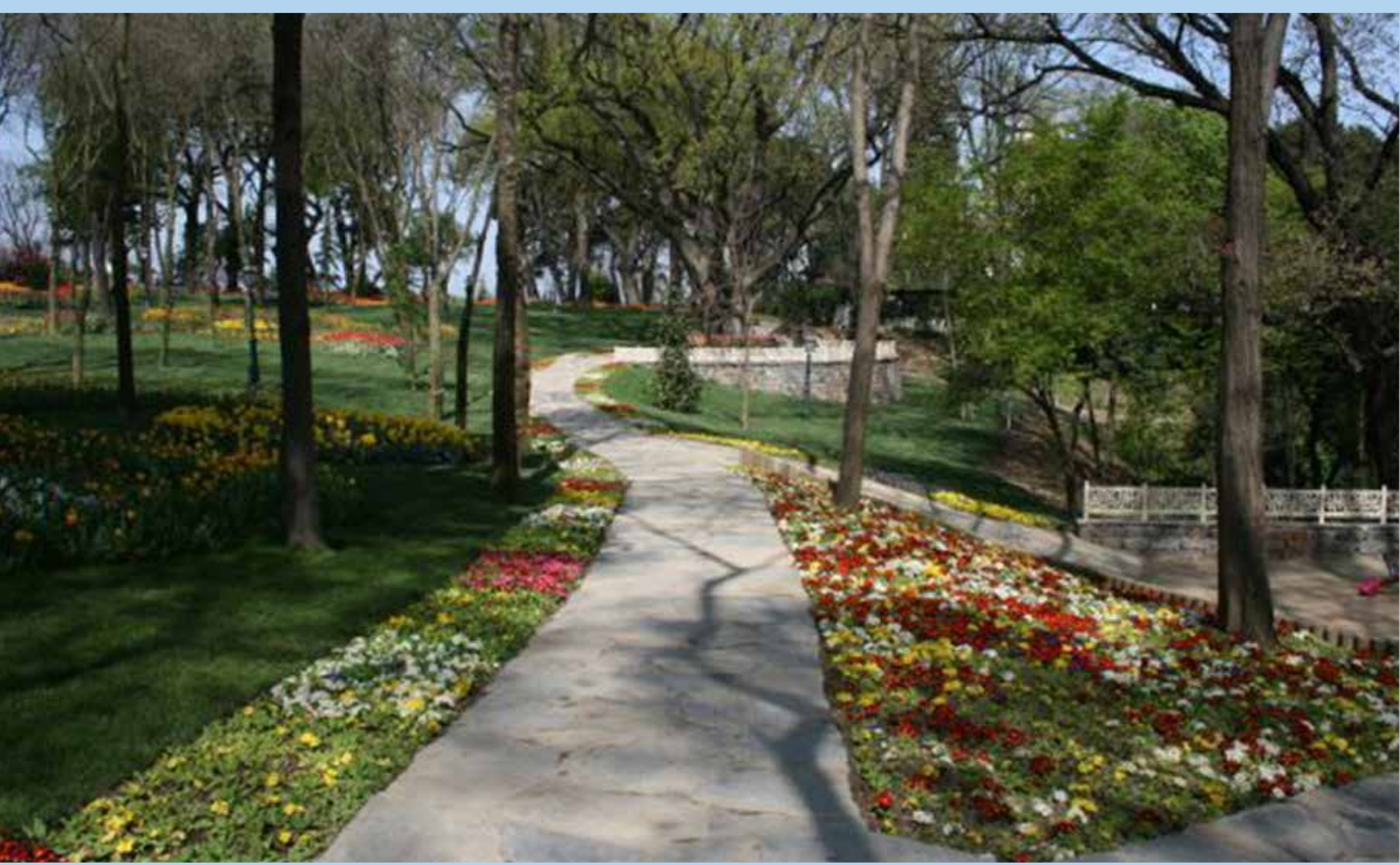
EUROPEAN SIDE INTERNATIONAL CITY FOREST

THE MOST NATURAL ADDRESS OF NATURAL LIFE

European Side International City Park, located on the north of Alibeyköy Dam Lake on an area of 4.500.000 m², designed as a natural training and research area as well as an entertainment and resting center where people of every age, notably children and students will be able to learn protection of nature and natural sources, have a better understanding of flora, fauna, ecosystem and biological diversity, how they interact with each other in a natural environment by experiencing, viewing and touching.

The City Forest planned as identical to other samples in the world and is the biggest one of Turkey. It is designed in a way that leads the usage of nature compatible materials without demaging the nature. Pedestrian priority in transportation and touring, nature compatible cycling paths, shuttle service between the stages also solves the transportation problem in the forest.





GROVE AND PARKS ACROSS İSTANBUL

Nuhoğlu Construction, who takes the charge of construction works of İstanbul Anatolian Side groves and parks beside landscaping of approximately 5.000.000 m² area up to now, has the pride to put into practice İstanbul-wide projects of many groves and parks. In the scope of the project; there are landscaping of all sorts of plants, green areas and peripherals and ready roll grass layout works including Şile Flag Park, Ağva 23 April Park, Çeşmeli Park, Kavala Park, Üsküdar Fethi Paşa Grove, Abide-i Hurriyet Anıtı Çevre Park, Fatih 50. Yıl Park, Hidiv Pavilion, İnönü Park, Pendik Gözdağı Grove, Pendik Indoor Swimming Pool, Moda İncirburnu Park, Küçük Çamlıca Grove, Beykoz Grove, Çekmeköy Park, garden of İSKİ Beşiktaş Branch.





FOREIGN PROJECTS

PRIME PLAZA SHOPPING MALL AND ENTERTAINMENT CENTER - KAZAKHSTAN
AL MAAMIL HOSPITAL - IRAQ
ATA COMPLEX LUXURIOUS ESTATES - KAZAKHSTAN
MITRIT HOSPITAL - LIBYA



PRIME PLAZA

SHOPPING MALL AND ENTERTAINMENT CENTER

ALMATY - KAZAKHSTAN

A WORLD FULL OF JOY AND AMUSEMENT

While the ordinary shopping mall mentality developing with joyable and amusing activity fields, Nuhoğlu Construction keeps presenting its success in this field with Prime Plaza Shopping Mall and Entertainment Center. This special complex satisfies the different needs by providing different featured areas from one unique center. In the project, which was designed as a four-storey shopping and entertainment center, there are 7 movie theaters, a bowling hall, a hypermarket, cafeterias and restaurants, an electronics shopping store and various other commercial spaces as well as two parking lots, one indoor and one outdoor.





AL MAAMIL HOSPITAL / IRAQ

A GENERAL HEALTH CENTER

Al Maamil hospital, which provides modern health services having all sections in-house, is located on 50.000 m² area. The hospital with a capacity of 122 beds with 100 normal and 22 intensive care, consists of 5 operating rooms, 2 delivery rooms, biochemistry, pathology, microbiology and hematology laboratories, an emergency service with bed including intensive care and dialysis units. In the scope of the project, there are a pharmacy, a medical archive, staff lodgings, a conference hall with capacity of 60 people, computer and meeting rooms, a dining hall, laundry and infrastructure buildings.





ATA COMPLEX LUXURIOUS ESTATES

MURATBAYEVA - KAZAKHSTAN

THE CONCEPT OF “LUXURIOUS”
IS REDEFINED IN KAZAKHSTAN

Nuhoğlu Construction, changing the concept of luxurious and putting above the line projects into the practice due to the featured privileges it brings into the housings, strengthens its image with Ata Luxurious Complex Estates. The project, whose 2 storeys composed of commercial spaces heightening on an indoor parking lot, has private apartments and offices on the other floors as well as duplex apartments with winter gardens on the top floors. The project in which earthquake isolator system is applied, attracts attention with the privileges of both security and comfort.





MITRIT HOSPITAL / LIBYA

HEALTH COMES FIRST, EVERYWHERE AND ALWAYS

Nuhoğlu Construction, while having ongoing projects on health also in other foreign lands, carries its quality level out of our boundries with the hospital project in Libya. The Mitrit Hospital project includes construction of the administration building, a pharmaceutical warehouse, a work shop, a cafeteria, a power and main generator buildings, a parking lot for ambulances, a mortuary unit with six compartments, an incinerator building and completion of polyclinic bulding construction.



▶ **HEAD OFFICE**

İnönü Mah. Kartal Cad.
No: 86 34755 Kayışdağı
Ataşehir - İstanbul - Turkey
Tel: +90 216 576 49 50
Fax: +90 216 576 74 66

▶ **YENİTEPE KADIKÖY SALES OFFICE**

Halk Sok. Golden Plaza İş Merkezi
E Blok No: 4 34742 Sahrayıcedit
İstanbul - Turkey
Tel: 444 4 616
Fax: +90 216 363 10 61

▶ **ANKARA BRANCH**

Aziziye Mah. Hava Sok.
No: 24/6 06690
Çankaya - Ankara - Turkey
Tel: +90 312 472 83 76-77-78
Fax: +90 312 472 83 92

▶ **LIBYA BRANCH**

Hey Andurus Region
P.O. Box: 93145
Tripoli - Libya
Tel: +218 21 715 40 21
Faks: +218 21 715 40 21

▶ **KAZAKHSTAN BRANCH**

Töle bi 285 050005
Almaty - Kazakhstan Ulitsa
No: 514/a Aksai Almaty - Kazakhstan
Tel - Faks: +7 727 222 04 13

▶ **IRAQ BRANCH**

Hayl Wahde 902. Mahelle 22. Sokak
No: 10 Kerrada - Baghdad - Iraq
Tel: +964 750 134 41 57
+964 781 302 64 24


'Above The Line' Projects

Nuhoğlu İnşaat San. ve Tic. A.Ş.
İnönü Mah. Kartal Cad. No: 86 34755 Kayışdağı Ataşehir - İstanbul - Turkey
Telephone: +90 216 576 49 50 Faks: +90 216 576 74 66
www.nuhogluinsaat.com.tr



 **nuhoğlu**

'Above The Line' Projects